



Guide Price  
£350,000  
Freehold

## Buci Crescent, Shoreham-By-Sea

- THREE BEDROOM
- SHOREHAM ACADEMY CATCHMENT AREA
- OFF STREET PARKING FOR TWO CARS
- SEMI DETACHED BUNGALOW
- POTENTIAL TO EXTEND STNP
- CLOSE PROXIMITY TO HOLMBUSH SHOPPING CENTRE

\*\*\*GUIDE PRICE: £350,000 - £375,000\*\*\*

Robert Luff & Co are delighted to bring to market this recently renovated, three bedroom semi detached bungalow. Surrounded by the coast, the Adur Valley and the South Downs, Shoreham is the ideal location for those wanting the seaside town experience but also wanting easy access to Brighton, Worthing & London. The town centre is home to a number of independent shops and galleries, whilst the likes of M&S and Next can be found at the Holmbush Shopping Centre. Accommodation offers; welcoming lounge with built in storage, separate modern kitchen, three bedrooms, family bathroom and sun room. Other benefits include; potential to extend STNP and off street parking for two cars

T: 01273 921133 E:  
[www.robertluff.co.uk](http://www.robertluff.co.uk)

**Robert  
Luff & Co**  
Sales | Lettings | Commercial



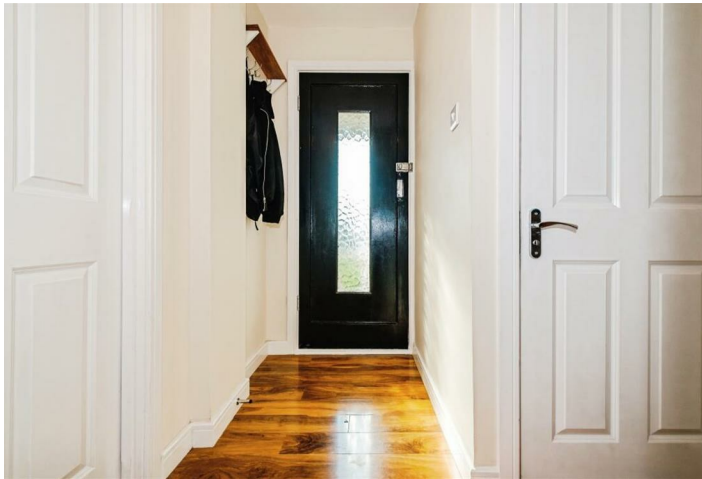
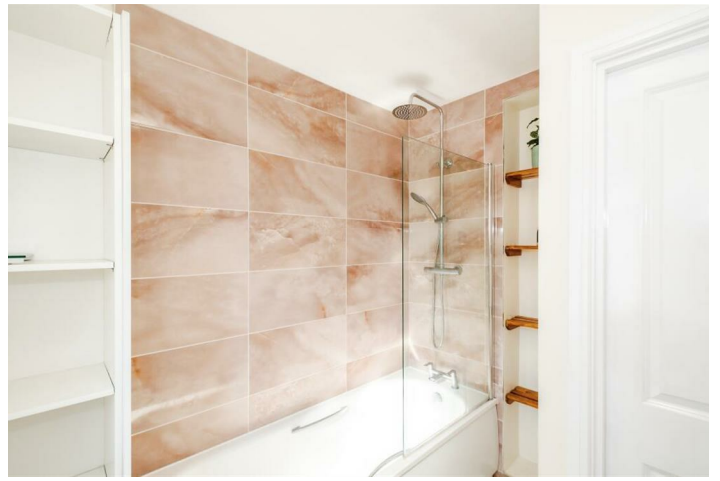
## Accommodation

### Agents Notes

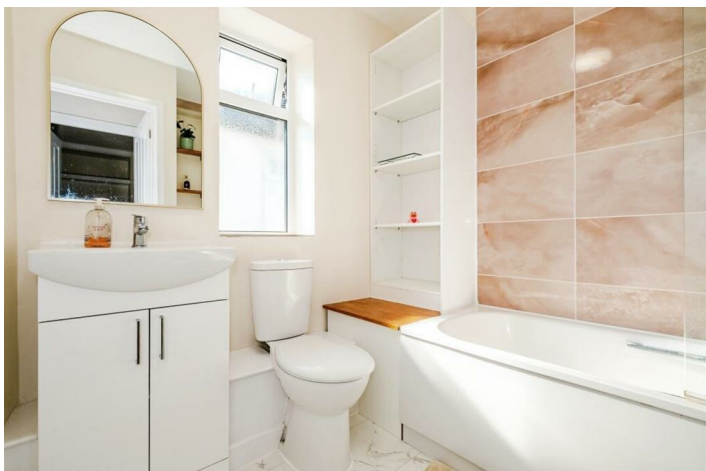
EPC Rating: C

Council Tax Band: C

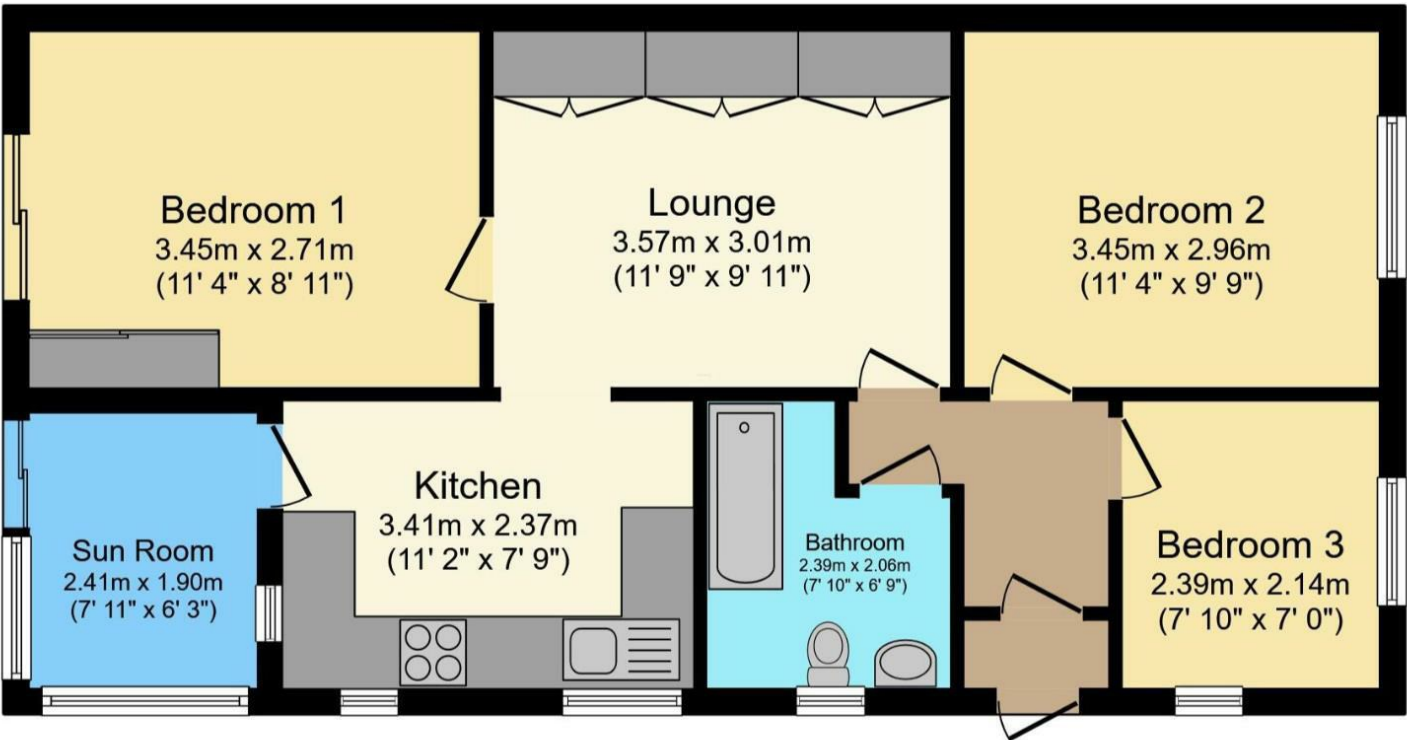




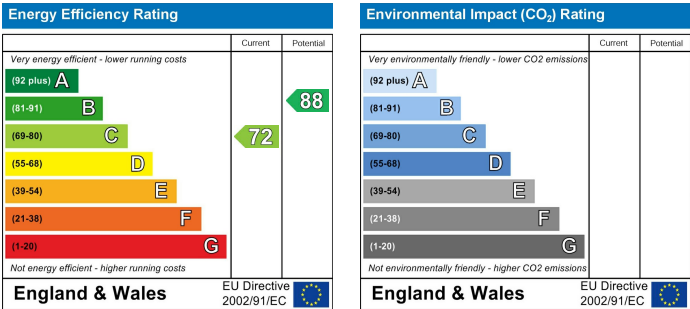
28 Blatchington Road, Hove, East Sussex, BN3 3YN  
T: 01273 921133 E:  
[www.robertluff.co.uk](http://www.robertluff.co.uk)



Floorplan



Total floor area 61.0 sq.m. (656 sq.ft.) approx



The information provided about this property does not constitute or form any part of an offer or contract, nor may it be regarded as representations. All interested parties must verify accuracy and your solicitor must verify tenure/lease information, fixtures and fittings and, where the property has been extended/converted, planning/building regulation consents. All dimensions are approximate and quoted for guidance only as are floor plans which are not to scale and their accuracy cannot be confirmed. References to appliances and/or services does not imply that they are necessarily in working order or fit for the purpose.